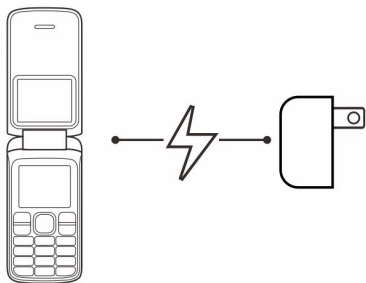


BLU
BOLD LIKE US
Z170L

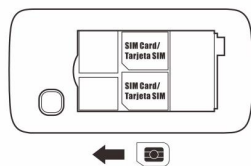


ZOEY FLEX 3G
QUICK START GUIDE
GUÍA RÁPIDA

1. BEFORE POWERING ON, CHARGE FOR 24 HOURS/ANTES DE ENCENDER, CARGUE POR 24 HORAS



2. INSERT SIM CARD/INSERTE LA TARJETA SIM



P.1

3. GPRS SETTING/ CONFIGURACIÓN GPRS

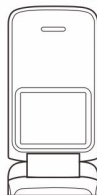
GPRS
MENU>SETTINGS>CONNECTIONS>NETWORK ACCOUNT>OPTIONS>NEW ACCOUNT

NAME>USERNAME>PASSWORD>ACCESS POINT>AUTH TYPE>GATEWAY>PORT>SET HOMEPAGE>ADVANCED SETTINGS

MENÚ>AJUSTES>CONEXIÓN>CUENTA DE RED>OPCIONES>CUENTA NUEVA

NOMBRE>NOMBRE DE USUARIO>CONTRASEÑA>PUNTO DE ACCESO>TIPO DE AUTH>PUERTO DE COMUNICACIÓN>PUERTO DE ESTABLECER PÁGINA DE INICIO>COMUNICACIÓN AVANZADA

4. FM RADIO/RADIO FM

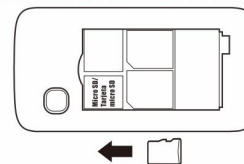


BUILT-IN ANTENNA/ ANTENA INTEGRADA

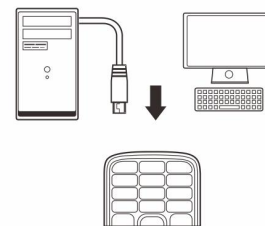
P.2

5. AUDIO PLAYER/ REPRODUCTOR DE AUDIO

1. INSERT THE MICRO SD CARD/ INSERTE LA TARJETA DE MEMORIA



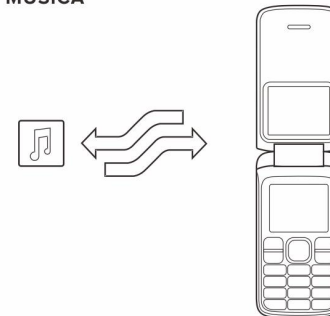
2. CONNECT THE PHONE WITH THE COMPUTER VIA USB CABLE/ CONECTE EL TELÉFONO CON LA COMPUTADORA VÍA CABLE USB



P.3

CONTINUE/CONTINUAR

3. COPY AND TRANSFER MUSIC FILES/ COPIAR Y TRANSFERIR ARCHIVOS DE MÚSICA



4. ENJOY THE AUDIO PLAYER/ DISFRUTE DEL REPRODUCTOR DE AUDIO

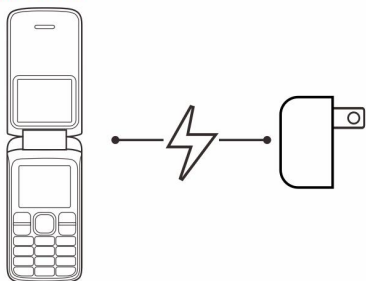
P.4

BLU
BOLD LIKE US
Z170L

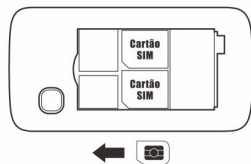


ZOEY FLEX 3G
GUIA RÁPIDO
GUIDE RAPIDE

1. ANTES DE LIGAR, CARREGUE POR 24 HORAS/AVANT LA MISE SOUS TENSION, CHARGE PENDANT 24 HEURES



2. INSIRA O CARTÃO SIM/ INSÉRER LA CARTE SIM



P.1

3. CONFIGURAÇÃO GPRS/ CONFIGURATION GPRS

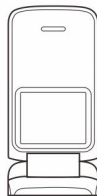
GPRS
MENU>CONFIGURAÇÕES > CONEXÃO > CONTA DA REDE > OPÇÕES > CONTA NOVA

NOME>NOME DO USUÁRIO>SENHA>PONTO DE ACESSO>TIPO DE AUTH>PORTA DE COMUNICAÇÃO>PORTA>ESTABELECEER PÁGINA INICIAL>CONFIGURAÇÕES AVANÇADAS

MENU>PARAMÈTRES > CONNEXION > COMPTE RÉSEAU > OPTIONS > NOUVEAU COMPTE

NOM>NOM D'UTILISATEUR>MOT DE PASSE>POINT D'ACCÈS>TYPE D'AUTHENTIFICATION>PORT DE COMMUNICATION>PORT>ÉTABLIR PAGE D'ACCUEIL>COMMUNICATION AVANÇÉE

4. RADIO FM

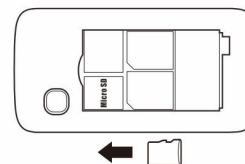


ANTENA INTEGRADA/ ANTENE INTÉGRÉE

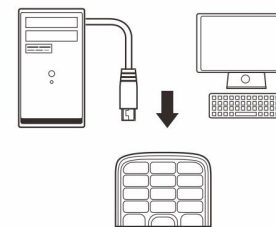
P.2

5. REPRODUTOR DE ÁUDIO/ LECTEUR DE AUDIO

1. INSIRA O CARTÃO MICRO SIM/ INSÉRER LA CARTE MICRO SIM



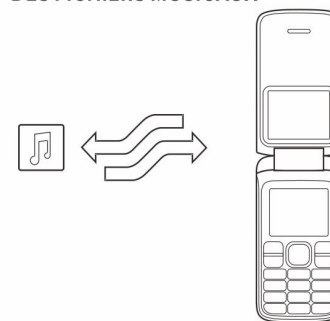
2. CONECTE O TELEFONE COM O COMPUTADOR VÍA O CABO USB/ CONNECTER LE TÉLÉPHONE À L'ORDINATEUR VIA UN CÂBLE USB



P.3

CONTINUAR /CONTINUER

3. COPIAR E TRANSFERIR ARQUIVOS DE MÚSICA/COPIER ET TRANSFERER DES FICHIERS MUSICAUX



4. APROVEITE O REPRODUTOR DE ÁUDIO/PROFITER DU LECTEUR DE AUDIO

P.4

*90x58 mm